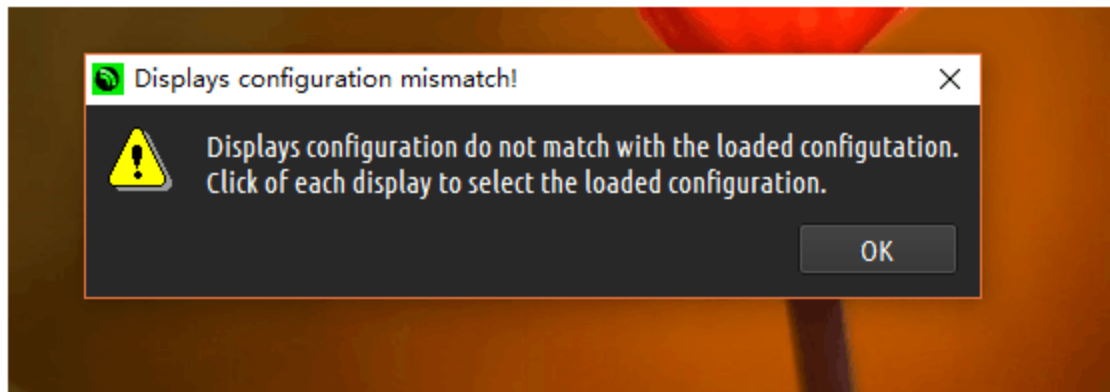


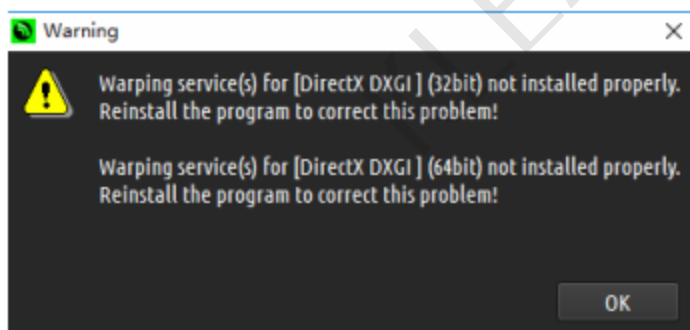
Considerations for fusion software

1. Open the fusion software to pop up Displays configuration mismatch! Dialog box.



Solution: Change the system resolution to the resolution when debugging and merging.
 For example: 1. When debugging the fusion, the resolution of two channels is 2048*768. Now, when the system resolution becomes two 1024*768, this prompt will pop up.
 2. After debugging the fusion, add the monitor, and the above prompt will also appear.

Second, open the fusion software and the following prompt will pop up



Solution: Uninstall the fusion software in the control panel and reinstall it.

Third, after debugging the integration, click desktop integration and find that it can't be integrated.

Solution: 1. If it is a GHOST system, replace it with the installation version.

2. If it is WIN7 system, check whether the desktop theme is AERO theme.

3. Windows Defender will delete some programs and close Windows Defender.

4. Uninstall the fusion software and reinstall it.

After installing the fusion software, don't rush to debug it. You can just pull the projection position to test whether it can be fused. It doesn't matter if it's found that it can't be merged after debugging. Save the debugged one. The saved path is the file with the suffix DAT in the C drive: C: \ users \ tianxue \ documents \ pixel warp dt \ config file. Uninstall the merged file and reinstall it. Just add

it to the saved DAT file.

IV. The fusion has been debugged, and various settings have been set. However, after restarting the computer or shutting down the computer, the fusion band will be separated and there will be double images.

Solution: Some projectors use VGA cable signal instability, and the projection position will jump, resulting in the change of the screen position after the computer is restarted, resulting in ghosting, and the fusion band is separated. This problem can be solved by replacing VGA cable with HDMI cable.

5. The fusion band is particularly bright or the fusion band is color cast.

Solution: 1. The fusion band is bright, so the gamma value of the fusion band can be increased, and the fusion band will become dark.

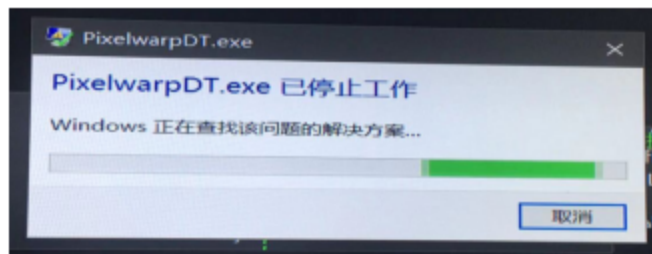
2. Fusion with color cast, projectors of the same model and batch should be selected. Projectors should not have color cast as much as possible, and pure white is the best for the pure white base map. If the projector is color cast, it is difficult to debug the fusion band. You can choose R, G and B to debug the gamma values respectively, but there will always be color cast in some colors.

VI. After plugging and unplugging the video cable, the screen resolution changes.

Solution: Replace the A card with EDID, which can lock the resolution. If the video card with edid is set, even if the monitor cable is unplugged, the system resolution will remain unchanged.

For example: WX2100 three screens; WX3200 four screens; WX8200 six screens.

VII. Fusion open display has stopped working.

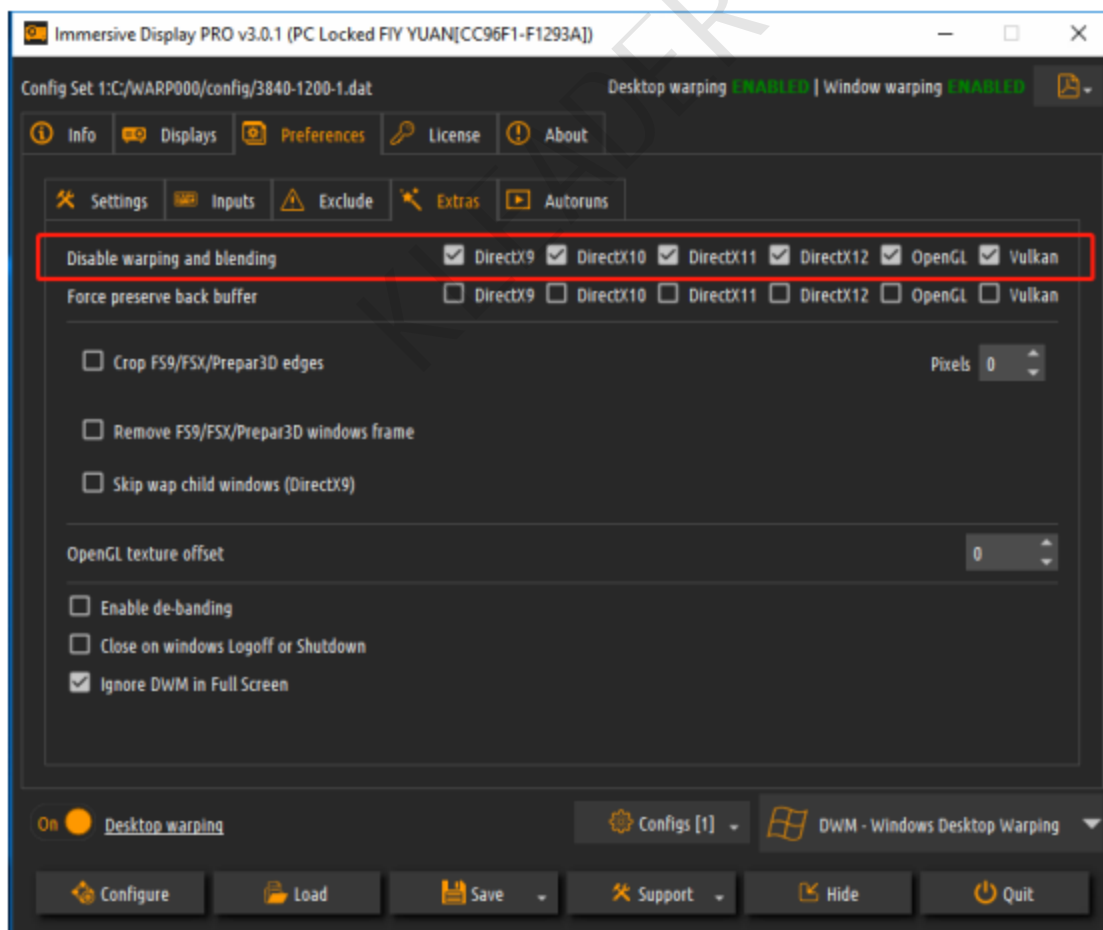


Solution: Check whether the video card driver is installed properly.

IX. After the fusion is started, the player or the high-altitude camera displays abnormal conditions.



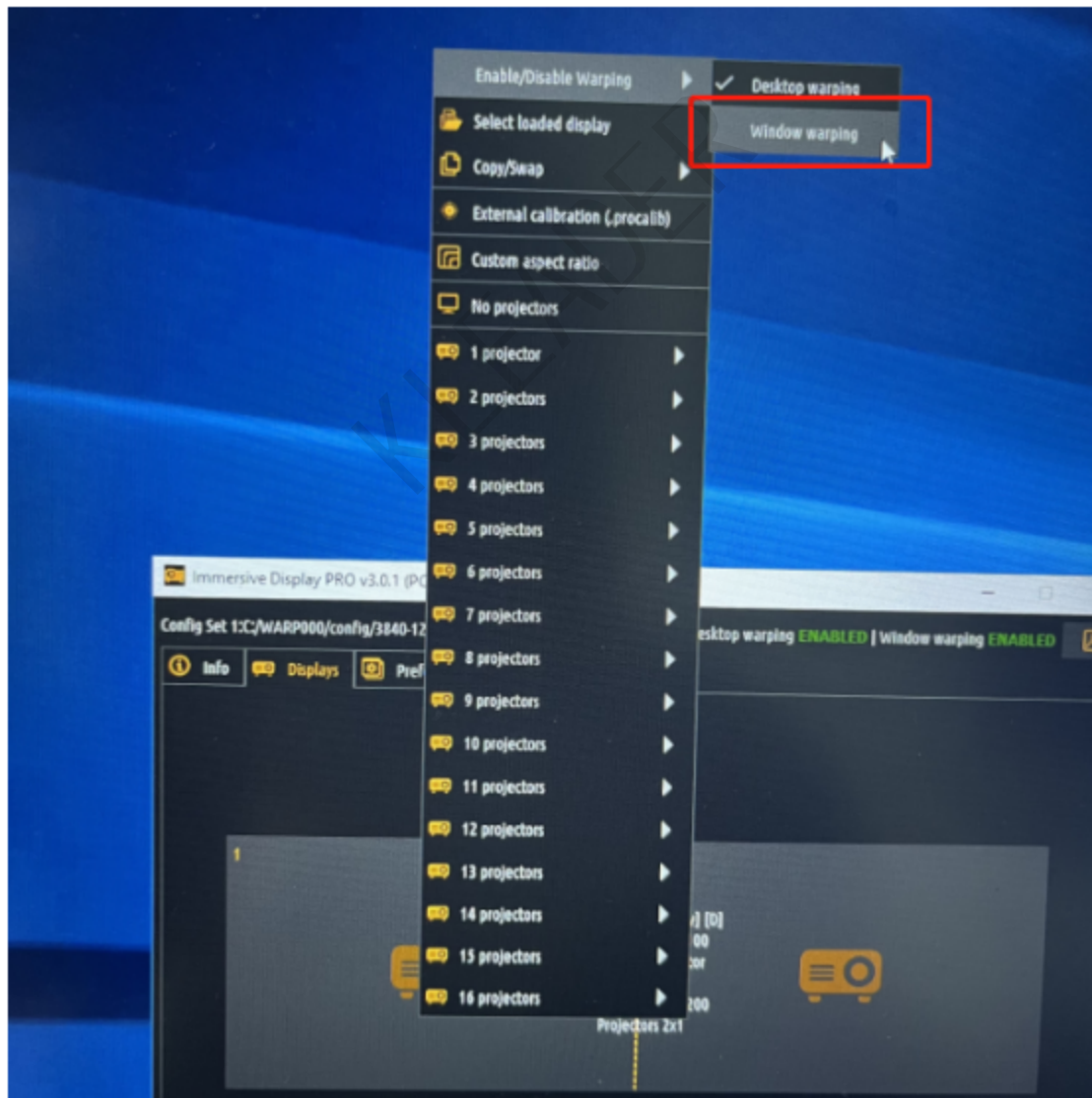
Solution: Check the five options of disabling surface correction and blending.



X. Yellow fusion software, desktop normal fusion, open the software display as shown in figure.



Solution: Uncheck the window warping.



XII. Considerations for selecting converged graphics card and system

Yellow version: supports the systems of win10 1607, win10 1709 and win10 1803;

Win10 1607LTSC system is recommended, which is the most stable with graphics A card W series WX series and N card p m series.

KLEADER