

# Drawing by scanner

## Operation Manual

### catalogue

Operation Manual.....	1
one. product presentation.....	2
two. Computer recommended configuration and optimization settings.....	2
2.1 Recommended computer configuration.....	2
2.2 Computer system Settings (must be set).....	2
2.2.3 Drive and installation.....	3
2.2.4 The game must be run with the English path.....	3
three. Hardware connection.....	4
3.1. Overall connection diagram.....	4
3.2 Scanner connection.....	4
3.3 Printing requirements and drawing path.....	6
3.4 Button shortcut key settings.....	8
four. Scanner software settings.....	9
4.1 Scanner camera selection.....	9
4.2 The Playlist.....	9
4.3 Storage Settings.....	10
4.4 Other settings.....	11
4.5 Save the high meter settings.....	11
five. Drawing and game parameter settings.....	12
5.1 Painting and drawing game parameter setting.....	12
5.2 Add LOGO to drawing games.....	13
six. The startup procedure is shown in the figure below.....	14
6.1 The interface shown above indicates that the high-meter software is not opened.....	14
6.2 Explain the normal startup.....	15
6.3 Scan the painted fish to the display interface of the magic pen drawing.....	15
6.4 Open the face head camera and go to the display interface of magic brush drawing.....	16
6.5 Scan, free draw template to the magic pen drawing display interface.....	17

## one. product presentation

It is composed of scanner and large projection wall (or LED screen), children can use the color card color. After the painting is completed, the children can see the images appear in the wall projection world. The children can also touch and interact.

## two. Computer recommended configuration and optimization settings

### 2.1 Recommended computer configuration

Large screen end:

[Processor]: I5-10400F

[Main board]: Microstar

[Memory]: 8G

[Hard disk]: Solid-state 240G

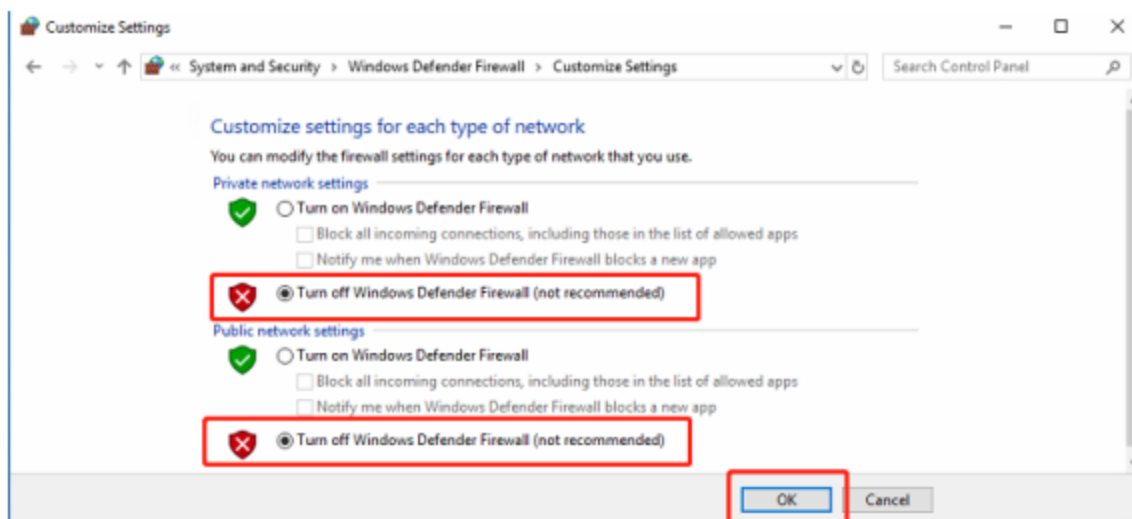
[Chassis]: First horse craftsman 5

[Graphics card]: independent graphics card GTX1050TI 4G and above

[Operating system]: windows 10 Professional version 64-bit

### 2.2 Computer system Settings (must be set)

#### 2.2.1 Turn off the firewall



2.2.2 Close the WIN10 System Disable the automatic update + Close the windows defender:  
Right-click the Start menu-Run-enter the gpedit.msc,

- (1) Computer configuration-management template- -Windows component- -Windows update- -double-click the configuration automatic update, select disabled;
- (2) Find the user configuration-management template-system Windows automatic update-select enabled;
- (3) Computer Configuration- -Management template- -windows component- -windows Defender (1709 or above) - -Close windows defender (virus protection program) - -instead of enabled and then confirmed.
- (4) 1909 and above also needs in the lower right corner of the taskbar-windows Security Center-Home
  - Virus and threat protection-shutdown
  - Account Protection-Close
  - Firewall and network protection-Domain, private, public-off
- (5) Please uninstall the antivirus software before starting the program.360, Kingsoft drug and other antivirus software affects the normal operation of the program.

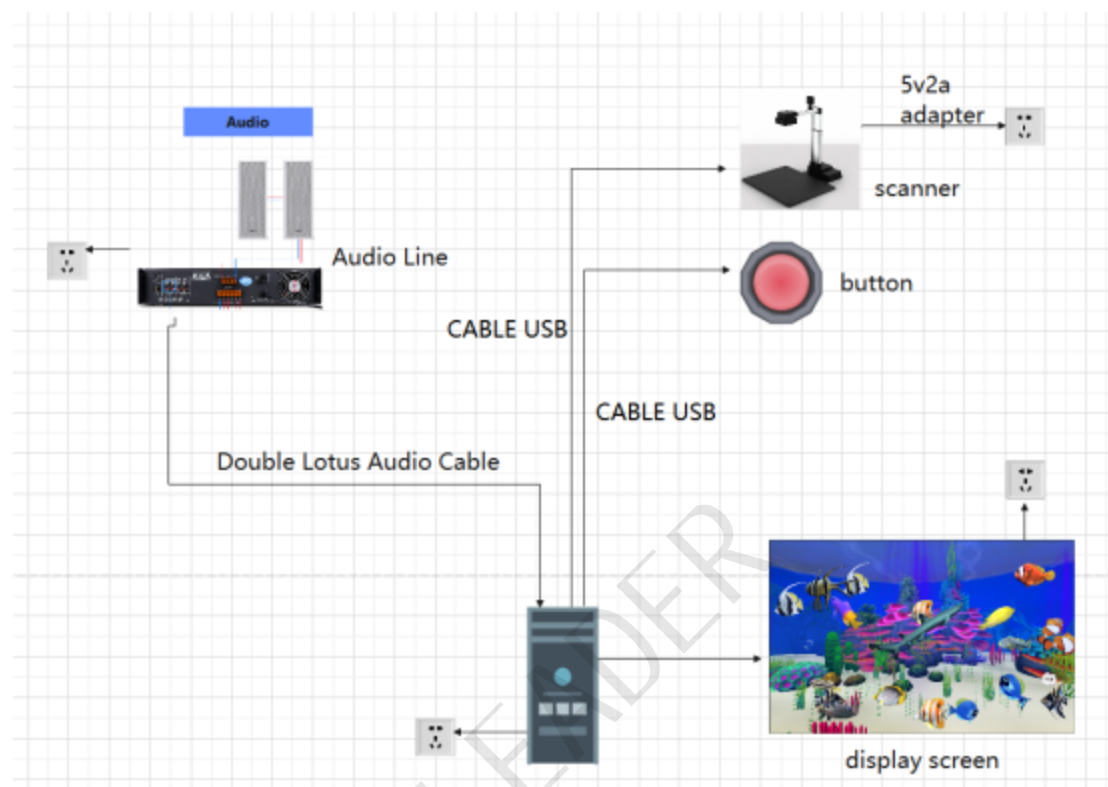
### 2.2.3 Drive and installation

- (1) Install the running environment in the runtime folder on the large-screen side:  
NDP452-KB2901907-x86-x64-AllOS-ENU.exe
- (2) Install the sense dongle driver on the large screen end, and plug the dongle into the large screen end host

### 2.2.4 The game must be run with the English path

### three. Hardware connection

#### 3.1. Overall connection diagram



#### 3.2 Scanner connection

(1) As shown in the picture, scanner, cable and button.



(2) The scanner usb must be connected to the computer rear usb3.0 port, 5V 1A power supply independently; button directly connected to the computer rear usb port.

(The usb extension line is a 5,10,30 meter powered version,

Do not use 15 and 20 meters of length, especially when the fill light on the brightest gear, easy to insufficient power supply.)

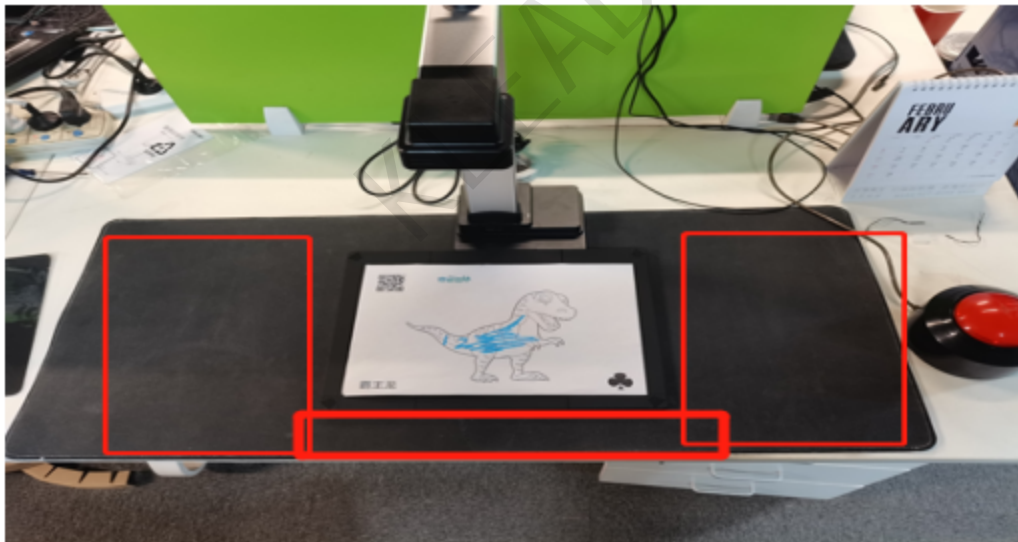


(3) Touch the top of the scanner, you can turn on the fill light, adjust the 4 level, use when the ambient light is dark, to brighten the drawing paper area.



(4) The scanner must be placed in the middle of the black mat, and the scanner must be placed on the surface of the pure black mat. When you open the scanner, only game paper and black borders are displayed in the video source, with no other background colors appearing.

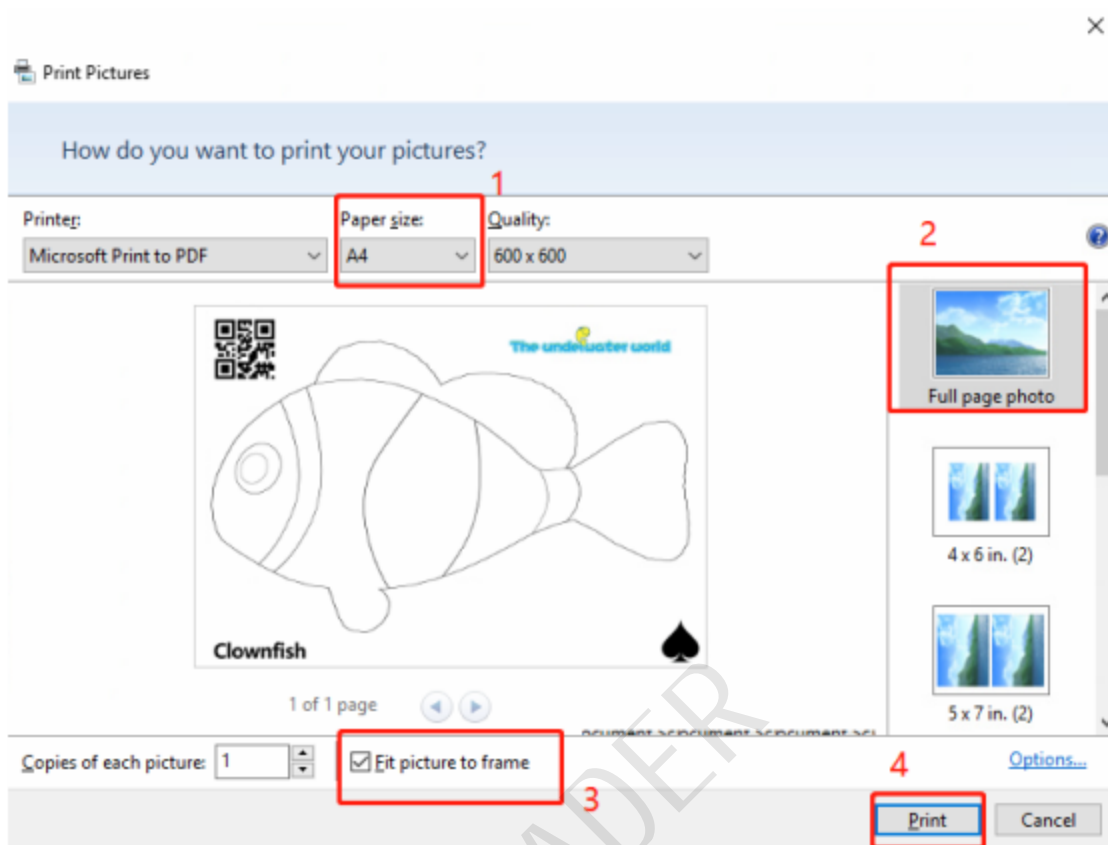
Draw the paper QR code placed in the upper left corner of the position, do not draw the paper backwards.



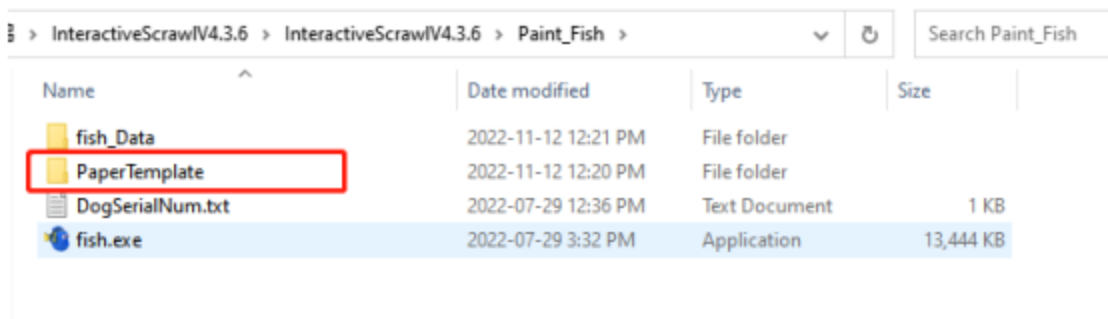
### 3.3 Printing requirements and drawing path

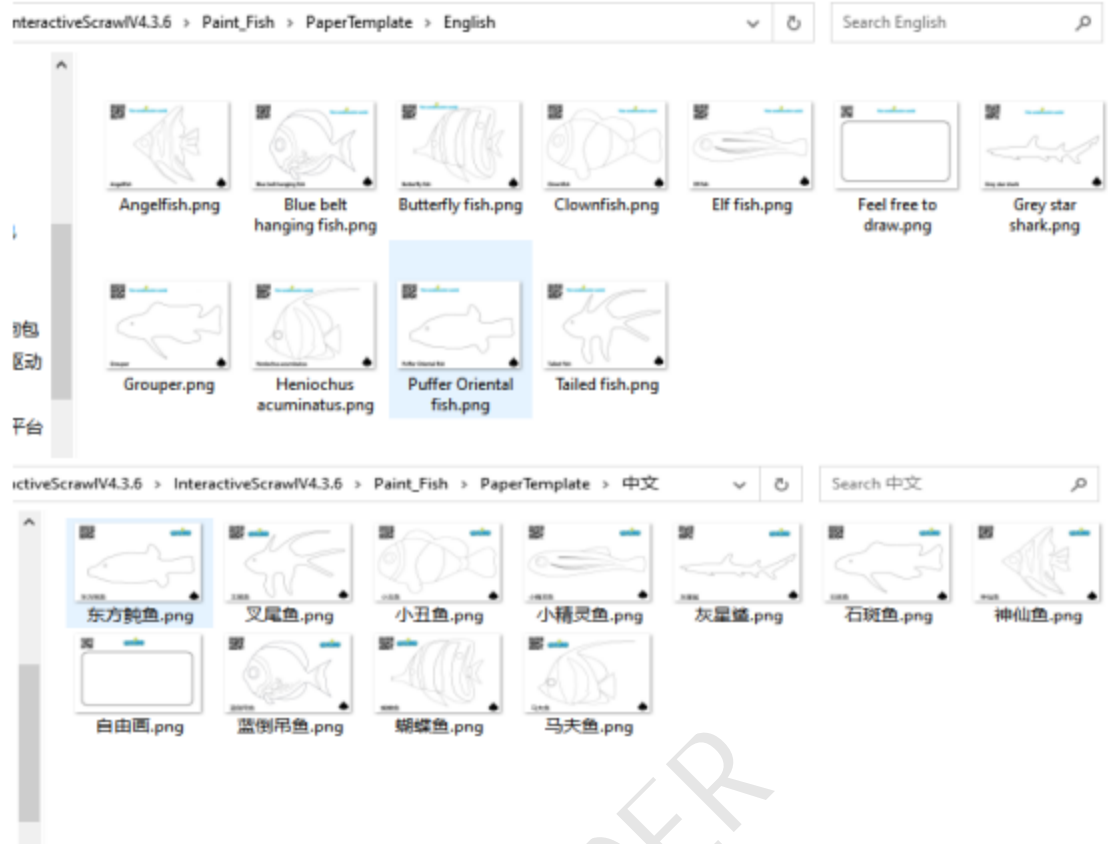
(1) Paper printing requirements: scanning paper must be the following picture requires printing (can not be copied), and clear.

[Paper selection A4], [Full-page photo], [adapted to border printing].



(2) Drawing paper path: Under the PaperTemplate folder of each drawing game package, there are English and Chinese drawing paper templates, and you can choose to print by themselves.





### 3.4 Button shortcut key settings

There is a switch and shortcut key behind the button, which is shown below. After setting, the button should be dialed to OFF to close, and then dialed to ON.(Delivery default is shortcut key 1, no setting)

(1) Quick key 1 set as shown, 1,2,3 up, 4,5 down.

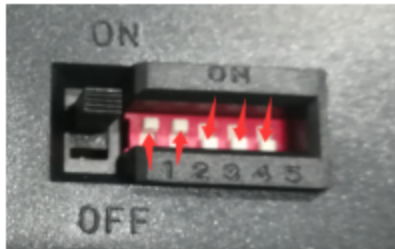


(2) The shortcut key 2 is set as shown here, 1,2,4 up, 3,5 down.

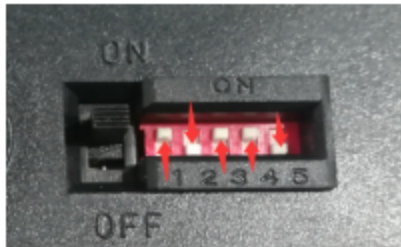


(3) The shortcut key 3 is set as shown here, 1,2 up, 3,4,5 down.





(4) The shortcut key 4 is set as shown here, 1,3,4 up, 2,5 down.



## four. Scanner software settings

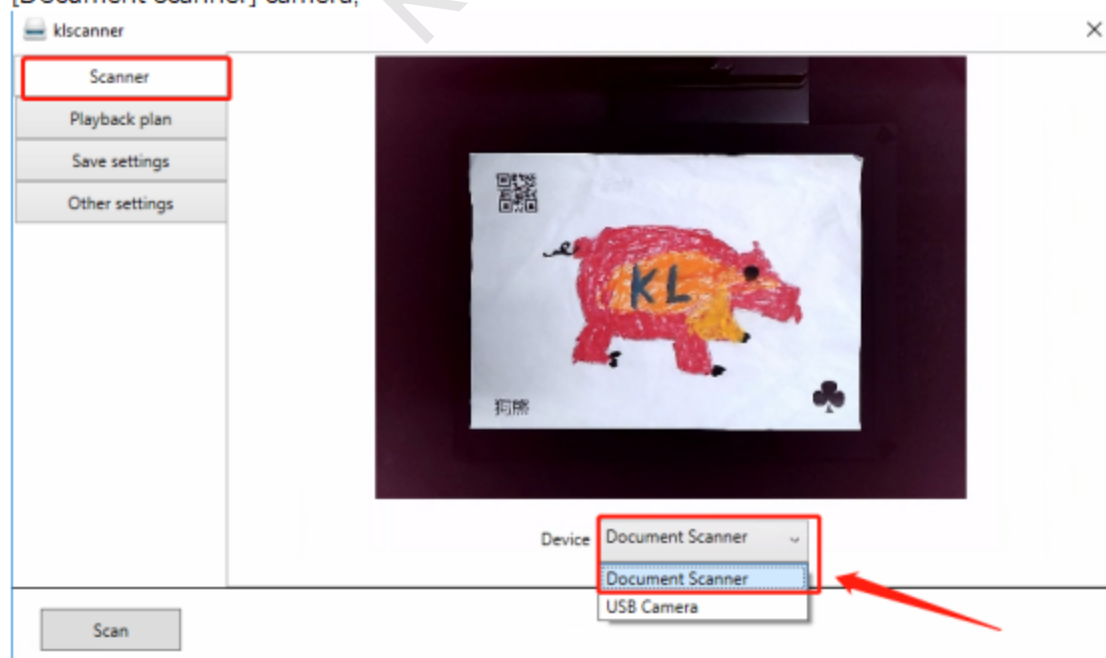
### 4.1 Scanner camera selection

First run the klscannerdriver folder



Open the software will automatically identify the Chinese and English version interface according to the language of the computer system.

Then set the camera scanned by the high camera, as shown in the figure below, select [Document Scanner] camera;



## 4.2 The Playlist

Under the playback plan list, click add to to add the game to the playlist (note: if there is radar interaction, add the game added to the radar system list, do not add here).

Duration (minutes): The playing time of each game can be set separately, in minutes;

Software starts automatic playback: The software starts the automatic playback;

Loop: Play loop

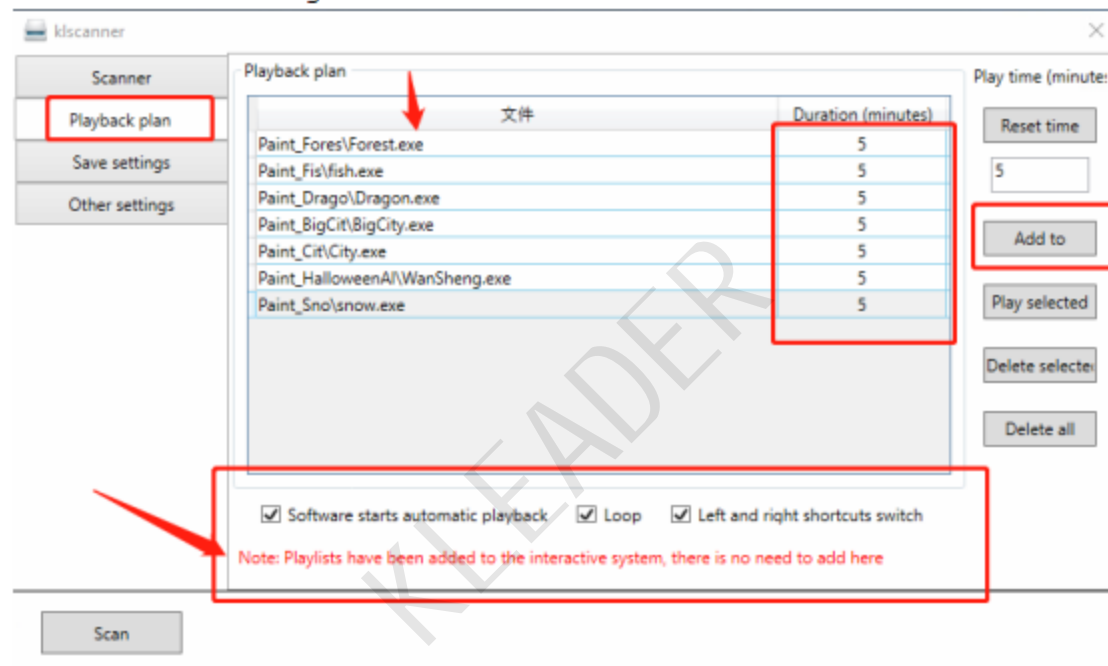
Left and right shortcuts switch: Keyboard left and right shortcut key switch;

Reset time: Reset of the list of the time of all games;

Play selected: Play the selected game;

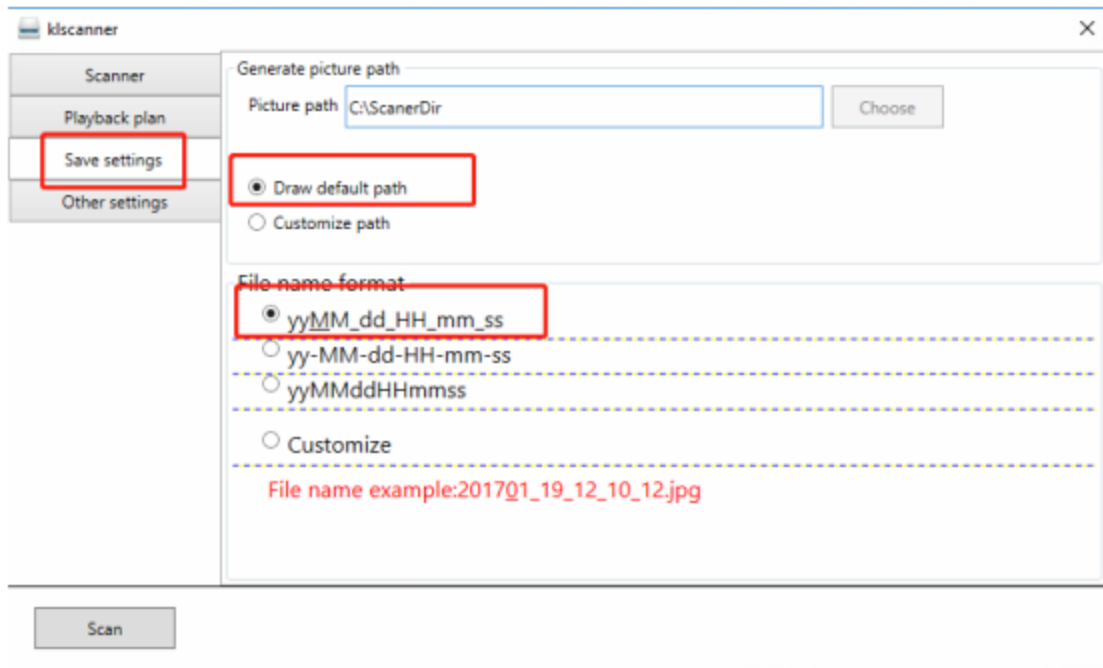
Delete selected: Delete the selected game;

Delete all: Delete all the games added to the list.



## 4.3 Storage Settings

The settings under save settings remain unchanged by default, without modification



## 4.4 Other settings

Boot success: Start up the klscanner software

Auto hide when software is on: automatically minimize hidden klscanner software after starting the software (check)

Touchscreen mode only: Only touch screen mode and iphone / ipad mode are checked (not OK)

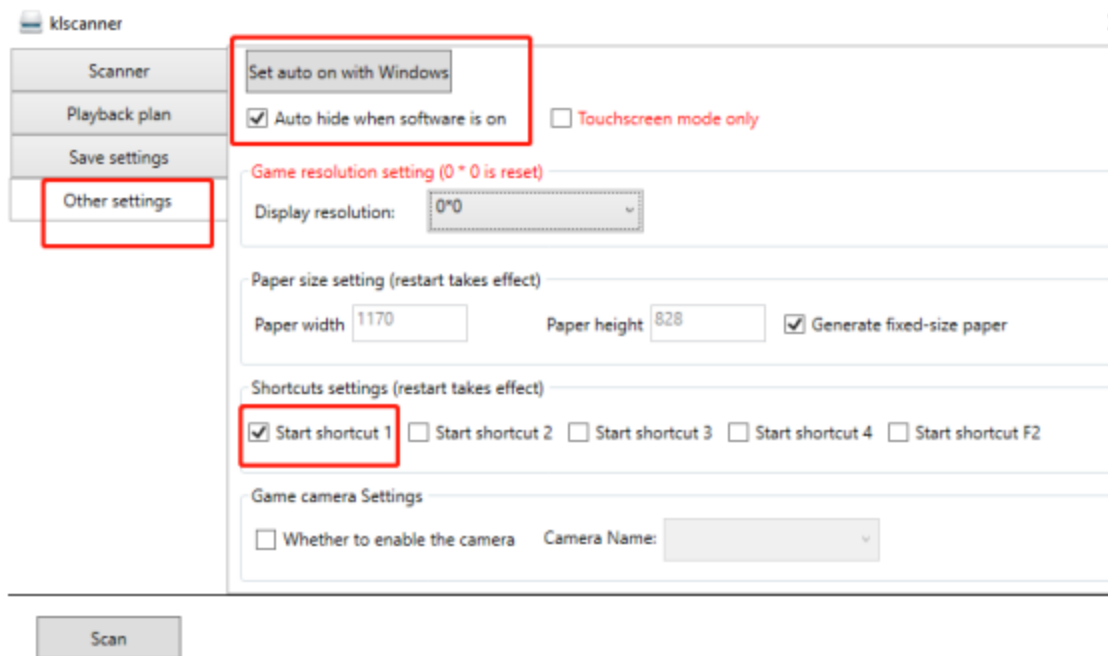
Game resolution setting (0 \* 0 is reset): You can set the resolution of all the magic pen drawing games with one click

Generate fixed-size paper: Generates fixed size paper with default check without modification (check)

Start shortcut 1: Start the shortcut key 1, (check off)

Game camera Settings / Whether to enable the camera: whether to enable the camera, face head photo camera

Support AI photo on the screen, countdown 5 seconds to take photos, can many people with the frame photo effect is clear.(Selective checked)



## 4.5 Save the high meter settings



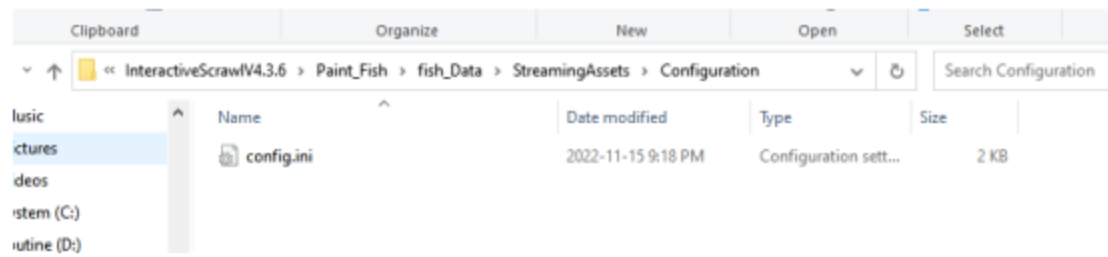
Find the klsccanner icon in the lower right corner of the taskbar, click on the right mouse button, and point Exit to exit once, which is equal to save the scanner settings.

## five. Drawing and game parameter settings

### 5.1 Painting and drawing game parameter setting

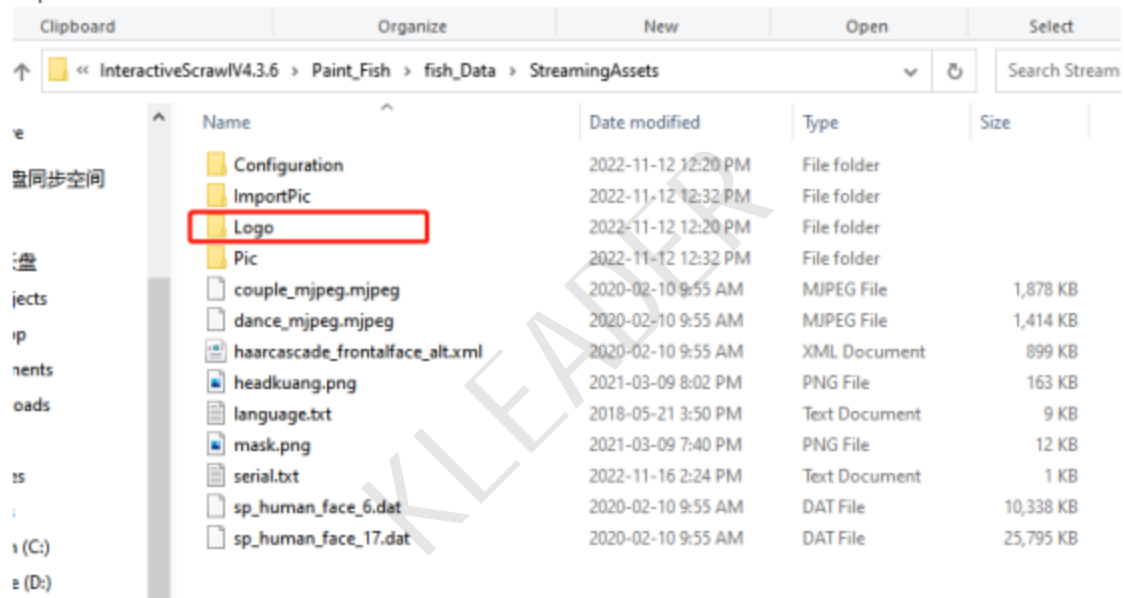
I  
 nteractiveScrawl\4.3.6\InteractiveScrawl\4.3.6\Paint\_Fish\fish\_Data\StreamingAssets\Config  
 uration \config.ini

In the config. In the ini document, you can customize some parameters by default.



## 5.2 Add LOGO to drawing games

Support custom add logo (customizable position and size), can achieve branding, Open the logo folder and make the picture inside it logo. Name png same format replacement



six. The startup procedure is shown in the figure below

6.1 The interface shown above indicates that the high-meter software is not opened



## 6.2 Explain the normal startup





### 6.3 Scan the painted fish to the display interface of the magic pen drawing





**6.4 Open the face head camera and go to the display interface of magic brush drawing**



**6.5 Scan, free draw template to the magic pen drawing display interface**

